

# 2023 Shefa Education Key Indicators

The Ministry of Education and Training Key Indicators are published every year. They are essential for the Ministry of Education and Training to ensure data-driven decision-making in the education sector. They help the ministry, provincial education offices, schools and development partners in their efforts to improve the sector. The data applies to private and government schools in Shefa.

## Schools in 2023

### Early Childhood



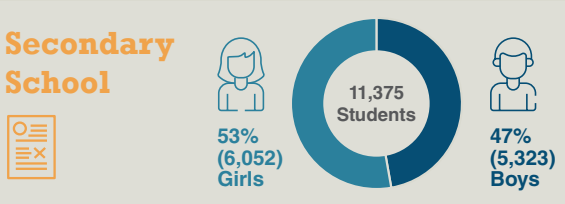
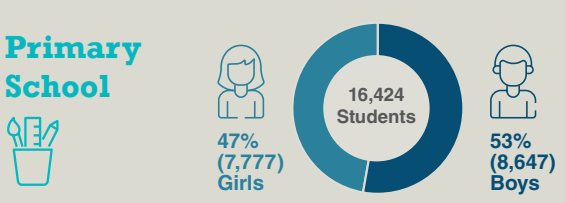
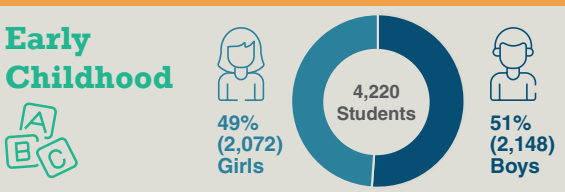
### Primary School



### Secondary School

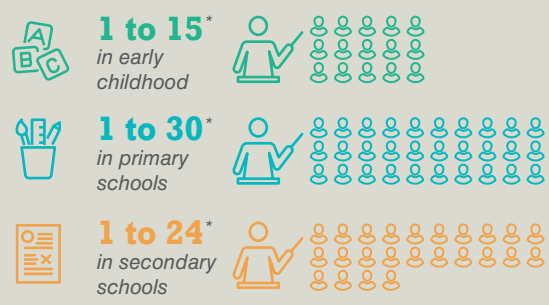


## Students in 2023



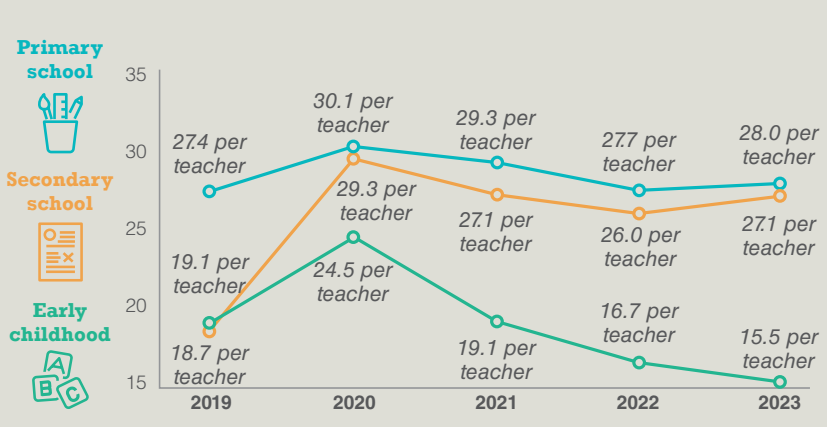
## Student teacher ratio per school type

Ministry of Education and Training standard student teacher ratios are:



\*The student teacher ratio in early childhood is prescribed by the Early Childhood Care & Education Policy of 2017. The student teacher ratios in primary and secondary schools ratios are prescribed by the Education Regulation Order No.44 of 2005.

## Actual student teacher ratio per school type



## Number of teachers per school type

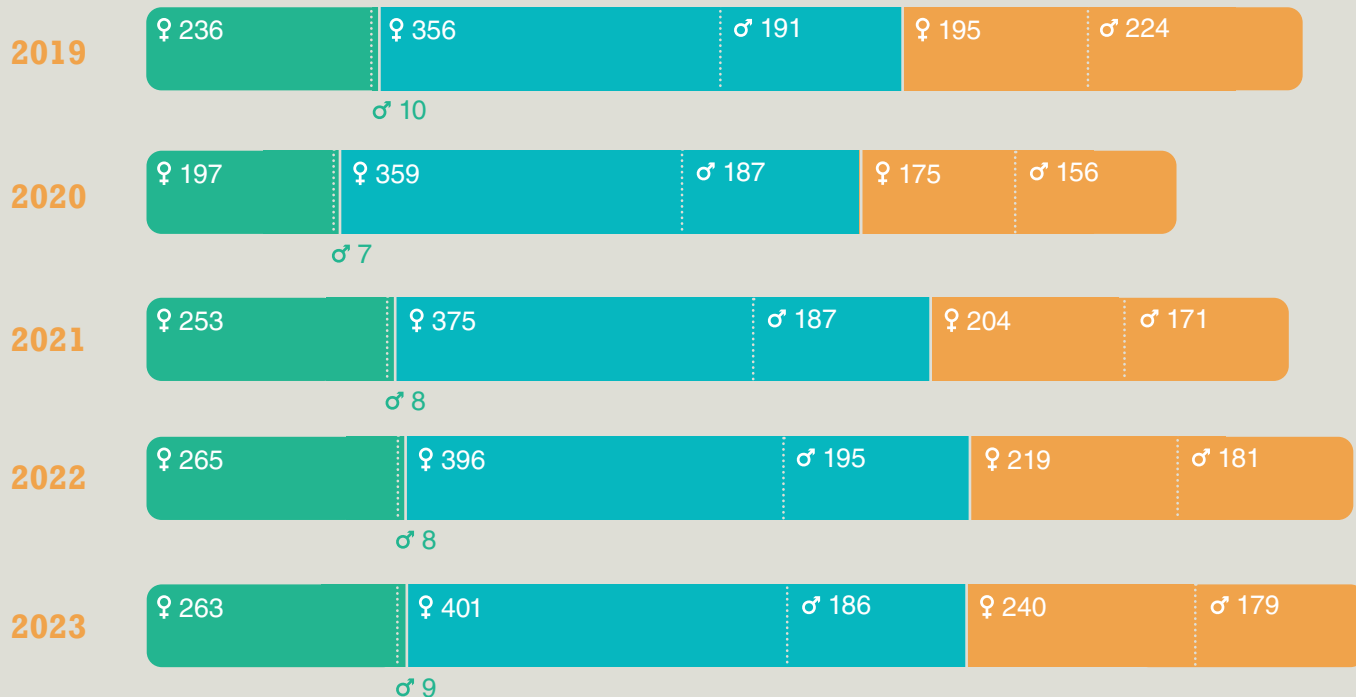
♀ Female

♂ Male

Early Childhood

Primary School

Secondary School



## Grant allocations in 2023



**Primary School**  
174,581,400 VT



**Early Childhood**

**26,241,600 VT**

**Secondary School**  
141,243,309 VT



**Post-School Education and Training**



**39,669,000 VT**

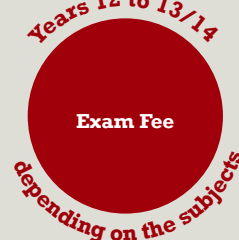
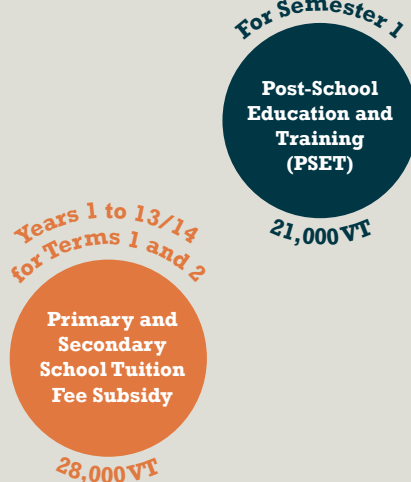
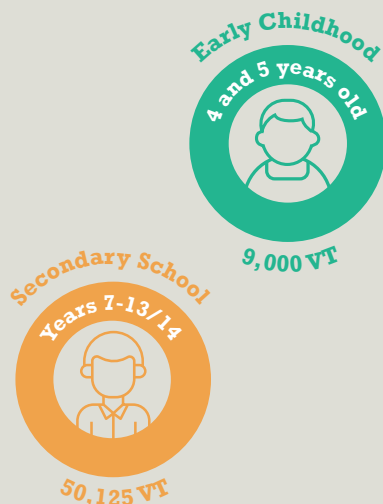
The Government of Vanuatu only pays grants for registered government and non-government assisted schools. Non-government (private) schools received a one-off grant in 2023. For registered early childhood centres, grants are only paid for 4 and 5-year-old students.

## Annual grant in 2023 per student

Funded by the Government of Vanuatu



Funded by the Government of Vanuatu and supported by the Government of Australia



**Ministry of Education & Training**  
Government of Vanuatu



**Australian Aid**